



INSTRUCTION MANUAL | ENGLISH

DAYCAP™ IN-BOTTLE FILTER

INTRODUCTION

The DayCap™ In-Bottle Filter is incredibly simple and easy to use—it replaces the existing cap of your favorite wide-mouth water bottle. As with all water filters, proper use and care of the DayCap will yield the best performance.

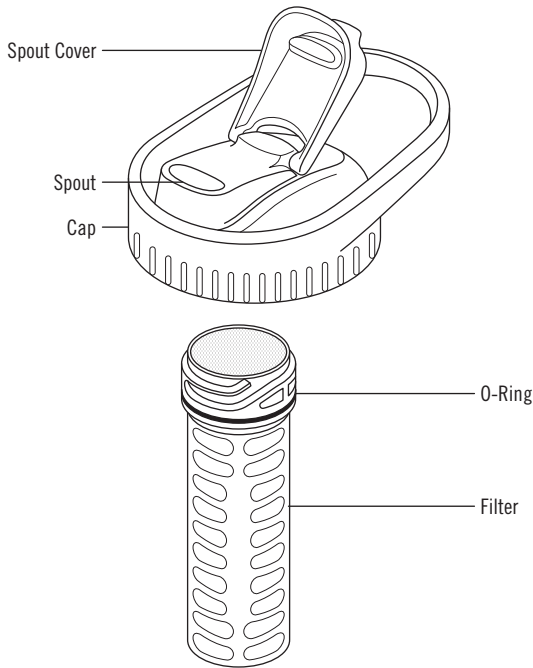
COMPATIBLE BOTTLES

The DayCap is **ONLY COMPATIBLE** with the following wide-mouth water bottles:

- Nalgene® Wide Mouth
- Hydro Flask® Wide Mouth
- Yeti® Yonder™
- CamelBak® Wide Mouth

WARNING: Using the DayCap In-Bottle Filter means you will be using your water bottle as a 'dirty reservoir' and expose it to water containing contaminants that can make you sick if ingested without being filtered. **It is critical to disinfect your water bottle before you use it without the filter.**

CONTENTS



⚠ WARNING

BIOLOGICAL HAZARD

There are hazards associated with backcountry travel and the use of water filters. Drinking untreated water may expose you to harmful microorganisms and increase your risk of gastrointestinal illness. Using this filter improperly increases your risk of exposure to harmful microorganisms and increases your risk of gastrointestinal illness. Reduce your chances of becoming sick by following the warnings and instructions in this manual and educating yourself on backcountry water safety.

YOU ARE RESPONSIBLE FOR YOUR OWN SAFETY AND THE SAFETY OF THOSE IN YOUR GROUP. PLEASE USE GOOD JUDGEMENT.

Never use the DayCap to filter seawater or chemically contaminated water, such as water from mining tailing ponds or near large agricultural operations. The DayCap does not make water from these sources drinkable and does not remove all viruses, chemicals and radioactive materials, or particles smaller than 0.2 Microns.

Keep the Dirty reservoir and other potentially contaminated parts away from filtered water to prevent cross contamination.

READ, UNDERSTAND AND FOLLOW ALL instructions and warnings in this manual before using this filter. Failure to follow the warnings and instructions may result in gastrointestinal illness.

IMPORTANT

Read and understand this entire manual carefully before assembling or using this water filter. Improper use of the filter may void the warranty and result in gastrointestinal illness. Keep this manual for future reference. If you do not understand this manual or have any questions, please call Cascade Designs at 1-800-531-9531.

⚠ WARNING

Do not drop or freeze the DayCap Microfilter. A damaged filter cannot prevent exposure to harmful microorganisms. If you suspect the cartridge may be damaged, perform an integrity check (see **Integrity Check**). If the cartridge is damaged, discontinue use and replace it.

⚠ WARNING

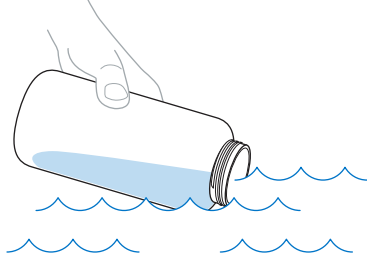
If the spout becomes contaminated with dirty water, rinse it with a bleach solution (see **"Disinfection"**) before filtering your water or drinking from the spout.

USING THE DAYCAP

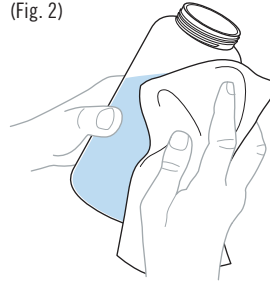
WATER COLLECTION

1. Remove the cap from your water bottle.
2. Scoop water from the source directly into your water bottle. (Fig. 1)
3. Take care to keep unfiltered water from any parts of the DayCap that may come into contact with your mouth. If necessary, wipe the bottle of excess dirty water after filling before you re-attach the cap. (Fig. 2)

(Fig. 1)



(Fig. 2)



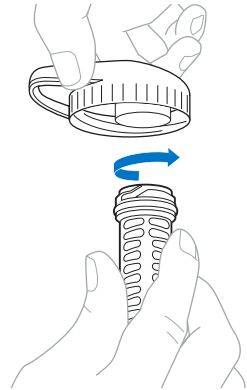
Tips:

- It's best practice to always collect the cleanest, clearest water source available. Moving water is better than still water.
- Filtering silty, cloudy, muddy, glacial, or tea-colored water can clog the filter faster. Frequently clean your filter for best performance (see **Cleaning**).
- When filling your water bottle, take care to keep the spout of the DayCap away from unfiltered water to avoid cross-contamination.

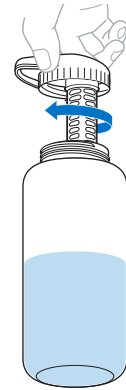
ASSEMBLY

1. Attach the filter to the underside of the cap. Turn until you reach a hard stop and you can't see the gasket. (Fig. 3)
2. Screw the cap on to your water bottle until it is hand-tight and seals the bottle. (Fig. 4)

(Fig. 3)



(Fig. 4)



FILTERING/DRINKING

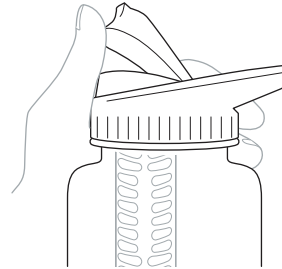
1. Flip open the spout cover. (Fig. 5)
2. Tip your water bottle up as you normally would to drink; some suction is needed to pull water through the filter. (Fig. 6)

Note: Without suction, water should not consistently pass through the filter when the bottle is inverted. It may drip at first, but it should quickly slow down. If water is passing through consistently, it could be a sign of a broken filter (see **Integrity Check**).

Wetting Out the Filter

'Wetting out' the filter is the process of purging air from the hollow fibers and replacing it with water. Trapped air can slow the flow speed. You will wet out the filter with normal use of the DayCap. The filter is considered fully wetted out after 1L of water has passed through it. Until it is fully wetted out, you may encounter slower flow speeds.

(Fig. 5)



(Fig. 6)



INTEGRITY CHECK

If your DayCap filter is dropped or if water freezes in the filter, it can break and fail to effectively filter water. If you are concerned this has occurred, check if the filter is still safe to use with the following method:

The integrity check method requires a squeezable wide-mouth bottle or reservoir. Compatible options include Nalgene® Wide Mouth Ultralite bottles (the 'cloudy' white Nalgene made of a more pliable plastic), MSR® Dromedary® Bags, and MSR® DromLite™ Bags.

1. Fill your squeezable wide-mouth bottle no more than half full.
2. Invert the bottle and squeeze until water passes through the filter and out of the spout. (Fig. 7)
3. Flip the bottle back over and continue to squeeze so that water is pushed up and fills the space inside the spout. Overflowing is ok. **(There must be a gap between the bottom of the filter and the water level inside the bottle.)** (Fig. 8)
4. Maintaining the squeeze pressure, look for a steady stream of bubbles coming up through the water inside the spout. (Fig. 9)
5. A steady stream of bubbles indicates the filter is compromised and not safe to use. **Stop using your DayCap until you install a replacement filter.**

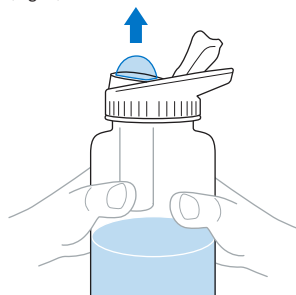
Note:

- If the fibers haven't been fully wetted out, then there may be an initial stream of bubbles. These will disappear with wetting if the filter is fully intact.
- Slightly tilting the bottle away from you helps hold water in the spout, allowing you to look for bubbles more easily.

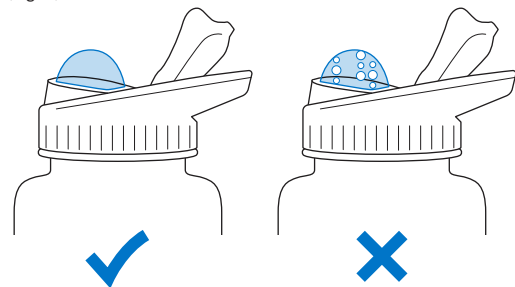
(Fig. 7)



(Fig. 8)



(Fig. 9)



MAINTENANCE & CLEANING

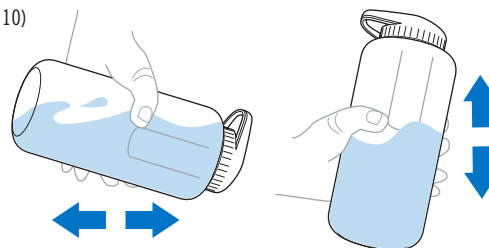
UNCLOGGING THE FILTER

Shake to Clean

The 'shake-to-clean' method works by dislodging contaminants stuck on the hollow fibers.

1. Fill your bottle about half full. Using unfiltered water is perfectly fine.
2. Replace the cap with the filter attached.
3. Shake vigorously for 30 seconds. It may help to use multiple angles (i.e. horizontally and vertically). (Fig. 10)
4. Unscrew the DayCap and empty your bottle. Refill and resume filtering.

(Fig. 10)



DISINFECTION

Disinfecting the filter, the cap and bottle will inhibit growth of microorganisms in the filter and allow your bottle to be used safely without the filter after being exposed to contaminated water.

Disinfecting your DayCap Filter and water bottle requires the use of a bleach solution. To make a bleach solution, combine **2.5 mL (or approx. 1/2 tsp) of bleach for every 1L of clean/clear water.**

Warning: In too high of a concentration, bleach can be very damaging to the filter. Make sure to use the ratio described above to ensure it is diluted enough and safe to use for disinfection.

Disinfection Steps:

1. Perform shake-to-clean procedure (see **Unclogging the Filter**) with tap water or bleach solution (see above for the correct ratio).
2. After the shake-to-clean procedure, remove cap from bottle and completely fill bottle with bleach solution (see above for the correct ratio). (Fig. 11)
3. Open spout cover, and then over a sink, reattach the cap/filter assembly to your filled bottle. Some amount of bleach solution will overflow into sink. Close spout cover.
4. Allow the system to sit on its side full of bleach solution for 30 minutes, roll the bottle over and let sit for another 30 minutes.
5. Discard bleach solution safely.
6. Hand wash or use dishwasher to clean cap (NOT THE FILTER) and bottle.

Alternatively, you can submerge the filter part of your DayCap in a bleach solution with the same ratio as described above, and hand wash the cap part and your water bottle or put them in the dishwasher. Be sure to let the filter soak for 60 min in the bleach solution.

Warning: The cap part of the DayCap—NOT THE FILTER—is dishwasher-safe.

(Fig. 11)



LONG-TERM STORAGE

Storing the Filter Part of the DayCap

Store the filter of your DayCap somewhere protected from dust or dirt accumulation, such as a plastic bag. It is perfectly OK to store your filter with water still in it so long as it has been disinfected first. If you do store it wet be sure it is not stored where it could freeze, as that may result in a broken filter.

Storing the Cap Part of the DayCap

Once disinfected, the cap can remain on your water bottle for daily use without the filter. Otherwise, store it with the filter after proper disinfection.

GASKET & O-RING CARE

Damaged gaskets and o-rings may result in leaking. Regularly inspect your gaskets or o-rings to see if they are cracking or flaking. Replace if necessary to avoid leaking and cross-contamination. Keep them lubricated to proactively avoid damage. A food-safe **silicone lubricant** is the best choice. **Lip balm** is a suitable in-field lubricant.

WARNING

Never store the DayCap filter cartridge in temperatures below 32F/0C. Freezing the filter will permanently damage the hollow fibers.

WARNING

Never use a dishwasher to disinfect or clean the filter. High heat will melt or damage the hollow fibers.

LIMITED WARRANTY/LIMITATIONS OF REMEDIES AND LIABILITY

USA AND CANADA

Limited Warranty. Cascade Designs, Inc. ("Cascade"), to the original owner ("Owner"), under intended use and maintenance, warrants the enclosed product ("Product") to be free from defects in materials and workmanship for the life of the Product. No warranty against defects in materials and workmanship will apply if Product is (i) altered in any way, (ii) used for purposes inconsistent with Product's intended purpose or design, or (iii) improperly maintained. Warranty will furthermore be voided where Owner/user (i) failed to follow Product instructions or warnings or (ii) subjected Product to misuse, abuse, or neglect.

During the warranty period, original Product parts determined by Cascade to be defective in materials or workmanship will be repaired or replaced as Owner's sole remedy. Cascade reserves the right to replace any discontinued product with a new product of comparable value and function. A returned product deemed irreparable becomes the property of Cascade and will not be returned.

EXCLUDING THE LIMITED WARRANTY PROVIDED ABOVE, CASCADE, ITS AFFILIATES AND THEIR SUPPLIERS, TO THE MAXIMUM EXTENT PERMITTED BY LAW, MAKE NO WARRANTIES, EXPRESSED OR IMPLIED, AND DISCLAIM ALL WARRANTIES, DUTIES AND CONDITIONS, WHETHER EXPRESSED, IMPLIED OR STATUTORY, WITH RESPECT TO THE PRODUCT, INCLUDING WITHOUT LIMITATION ANY IMPLIED WARRANTIES OF MERCHANTABILITY, AGAINST LATENT DEFECTS, FITNESS FOR A PARTICULAR PURPOSE, OR CORRESPONDENCE TO DESCRIPTION.

Warranty Service. To obtain service under this warranty, the warranty-eligible Product must be presented to a Cascade authorized dealer. In the United States and Canada, warranty service may also be obtained by calling 1.800.531.9531 [M - F, 8:00 a.m. - 4:00 p.m., PDT]. Owner is responsible for all costs associated with returning Product to Cascade for service. Where at its sole discretion Cascade deems Product eligible for warranty repair or replacement, Cascade will pay the shipping and handling associated with returning repaired or replaced Product to Owner. In instances where Cascade deems a returned product ineligible for warranty service, Cascade will, if possible, repair product for a reasonable charge that includes return shipping and handling. For warranty return service details, please go to www.platy.com.

Limitation of Remedies. Should a court of competent jurisdiction find the limited warranty set forth above breached, Cascade's only obligation will be to, at its option, either repair or replace Product. Should the aforementioned remedy fail of its essential purpose, Cascade will, in exchange for return of Product, refund to Owner Product's original purchase price.

THE FOREGOING REMEDY IS THE SOLE AND EXCLUSIVE REMEDY OF THE PURCHASER AGAINST CASCADE, ITS AFFILIATES AND THEIR SUPPLIERS, REGARDLESS OF LEGAL THEORY.

Limitation of Liability. Cascade's, its affiliates' and their suppliers' maximum liability is limited to incidental damages not to exceed the original purchase price of the Product. CASCADE, ITS AFFILIATES AND THEIR SUPPLIERS HEREBY DISCLAIM AND EXCLUDE ANY LIABILITY FOR ANY CONSEQUENTIAL OR OTHER DAMAGES RESULTING FROM ANY REASON WHATSOEVER. THIS EXCLUSION AND LIMITATION APPLIES TO ALL LEGAL THEORIES UNDER WHICH DAMAGES MAY BE SOUGHT, AND WILL APPLY EVEN IF ANY REMEDY FAILS OF ITS ESSENTIAL PURPOSE.

This limited warranty gives Owner specific legal rights; Owner may have additional rights, which may vary state to state. Always completely follow safety, use, operation, and maintenance instructions for this or any other Cascade product. European Union customer statutory rights are not affected.

FOR PRODUCT SERVICE AND INFORMATION CONTACT:

Cascade Designs, Inc.

4000 First Avenue South, Seattle, WA 98134 USA | 1-800-531-9531

Cascade Designs, Ltd.

Dwyer Road, Middleton, County Cork, Ireland | (+353) 21-4621400

#34-338-1 | 11/23

www.platy.com