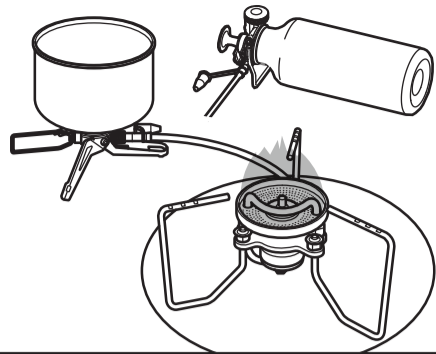


StormBreaker

OD-1ST Patent Pending

Instruction Manual

Important. Read these instructions for use carefully. Familiarize yourself with the appliance before connecting it to its gas container. Keep these instructions for future reference.



FOR OUTDOOR USE ONLY

⚠ DANGER



USE ONLY IN WELL-VENTILATED AREAS.
CARBON MONOXIDE HAZARD: USING THIS APPLIANCE IN AN ENCLOSED AREA MAY CAUSE DEATH. DO NOT USE IN CARS, VANS, TENTS, MARINE CRAFT, MOVABLE HOMES OR SIMILAR LOCATIONS.

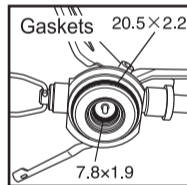
CAUTIONS and WARNINGS

Regarding the appliance

- Incorrect handling may lead to the possibility of death or serious injuries to the operator. This product is an outdoor stove for camping and hiking. This stove is designed for the purpose of boiling hot water and preparing a meal. Never use this stove for anything other than for these intended purposes.
- Never use the stove for drying clothes etc. Failure to follow this instruction may cause fire, death, bodily injuries, and property damage.
- Never use the stove near any kind of flammable materials. Keep all such materials at least 1.2m/4ft away from the sides of the stove and at least 1.5m/5ft away from the top while stove is in use.
- Never place flammable objects in, on or around the stove.
- Never use the stove in a place where there is danger of falling objects.
- Prepare a safe, flat surface when using the stove.
- Do not use the stove in places where there is the possibility that the surface may deform or discolor due to reflective heat from the stove.
- Caution: Never touch the stove when it is hot.
- Keep children away from the stove when it is in use.
- Never put face or hands close to or over the burner when igniting the stove.
- If abnormal sound/flame is heard or observed, stop using unit immediately and contact your local dealer or SOTO for service.
- Do not use this appliance if it is leaking, damaged or does not operate properly.
- In the event that a leak (smell of gas) is detected, immediately turn the appliance off if in use. Detach the fuel canister from the appliance and check to see if the leak or smell continues.
- If there is a leak from this appliance (smell of gas) and the gas flow cannot be stopped, move the appliance to a well-ventilated location, preferably outside, away from any ignition source. Check for leaks using soapy water. Do not try to detect leaks using a flame.
- Be sure to remove appliance from carrier pouch, or any other packing material.
- When in use, be sure that there is enough oxygen supply and do not cover any of the combustion air openings located on the post of the stove body.
- Be sure to use this stove on a stable, flat surface.
- Always use this stove in an open-air environment. Never use stove in an enclosed area.
- Do not use the appliance in any way or for any purpose other than described in this manual.
- Confirm that pot supports are secured in place prior to use by applying pressure to avoid potential bodily harm.
- This appliance is to be operated on a horizontal surface.
- Use only one stove for each pot, and do not allow any vessel to boil dry.
- After several uses, parts of the stove may become discolored. This discoloration is natural and does not affect the stove's performance.
- Check that seals between the appliance and the gas container are in place and in good condition before connecting to the gas container. Do not use the appliance if it has damaged or worn seals. Do not use an appliance that is leaking, damaged or that does not operate properly.

Regarding the replaceable pot support

- Always place the pot support on the burner head when in use. Never use the stove without first setting up the pot support.
- The stove must be used with the designated pot support. Always set up the pot support according to instructions.
- Confirm that the stove is completely cooled off when setting up or removing the pot support.
- Never apply excess force to the pot support. Failure to follow these instructions may cause the pot support to bend or deform.



CAUTION: Accessible parts may be very hot. Keep away from young children.

FOR OUTDOOR USE ONLY

- Do not modify this appliance.
- Never use auxiliary tools such as an iron plate, grill net, ceramic products, smoker etc, except those specified. These may cause an accident.

Applicable Fuel

Regarding the fuel canister

This stove shall only use a fuel cartridge certified to EN 417 with a mixture of 70% butane/30% propane. It may be hazardous to attempt to fit other types of gas containers.

Type of gas: Butane-propane mixture

Category : A vapor Pressure Propane Butane Mix Appliance.

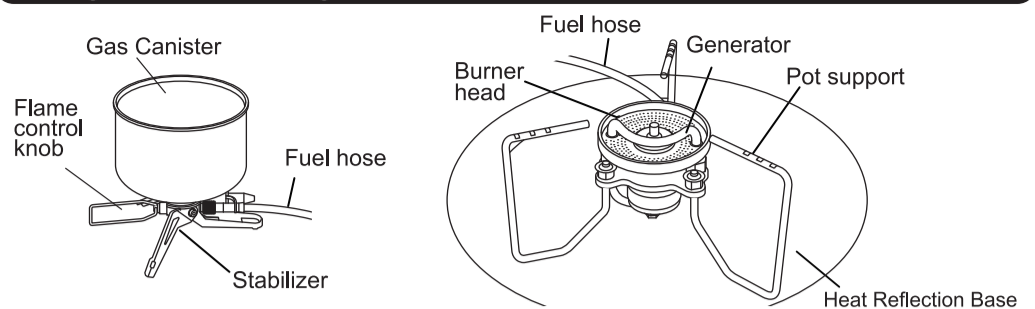
CAUTIONS and WARNINGS

- Carefully read the instructions displayed on the gas canister before using.
- Store the gas canister in a cool place. Avoid fire or direct sunlight at all times. Store in a dry area with a room temperature below 40 °C.
- Never leave the gas canister in a hot place such as in front of heaters. The heat from such heating devices may cause an explosion of the gas canister.
- Do not throw any gas canisters, used or unused, into a fire. Such action may cause a dangerous explosion and may lead to severe bodily injuries or property damage. Dispose of fuel properly as a hazardous material.
- Check stored gas canisters from time to time. Never use a canister when rust is present on it. Be sure to properly dispose of all gas canisters. Be sure to check with local authorities and follow their instructions when disposing of fuel canisters.
- Always check if the stove and the gas canister units are properly functioning when using the stove. From time-to-time, check for normal combustion during use.
- Avoid dangerous fuel leaks by making sure the canister and stove are threaded correctly. Detach the canister after use, and store canister separately.
- Keep stove and fuel canister away from all actual or potential heat sources.
- Store fuel canisters in a well-ventilated area out of the reach of children.
- Gas canisters must be changed in a well-ventilated location, preferably outside, away from other people and any sources of ignition, such as naked flames, pilot flames, electric heaters/equipment.
- Check that the cartridge is empty before changing it (shake to listen for noise made by the liquid). Check that burners are extinguished before disconnecting the gas container.
- How to check if the gas canister is empty: Install appliance onto fuel canister. Open valve to ignite. If no gas flows, the fuel canister is empty. Remove fuel canister from appliance. Gently shake to check for any residual fuel remaining inside.

The following usages are strictly prohibited! The gas canister may overheat causing explosion or deformation of the burner:

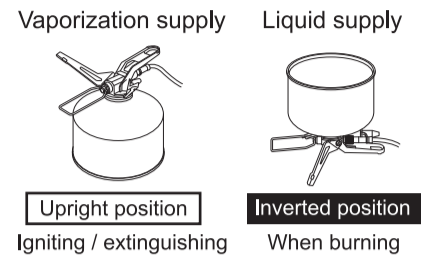
- Never use this stove to start charcoal
- No parallel use of two or more stoves
- Never use the stove in places where a gas canister may overheat due to heat from the sun.
- When using with a gas canister, maintain a minimum 25 cm. distance between the burner and canister at all times.
- Use of a windscreen, blocks, boards etc. is prohibited when the stove and the gas canister are in use. Failure to comply with this instruction may cause explosions, serious bodily injuries, and property damage.

Using the stove with a gas canister



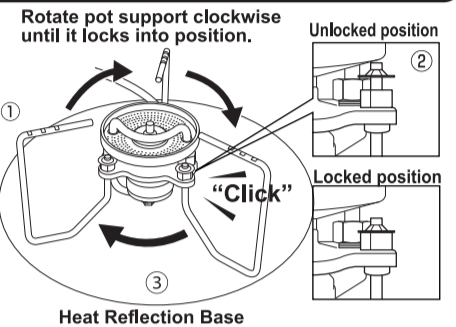
The StormBreaker is equipped with a generator that allows the use of both LP gas and white gasoline. **Whenever installing the gas canister, igniting gas, or extinguishing a flame, the gas canister must be in the upright position.**

When igniting the gas, it is necessary to send the liquid form of gas to the generator. Release the gas supply to the generator after turning the gas canister upside down. This will supply the liquid form of gas in the initial ignition stage. In an environment where the temperature is 0 °C or below, white gasoline is recommended.



Setting up the stove

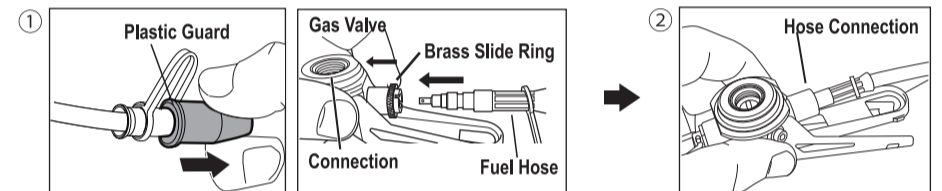
- 1 Open 3 pot support system by rotating each support to the left.
- 2 Confirm that the base of pot support is securely in place and in the "locked position".
- 3 Prepare Heat Reflection Base and place stove in the center.



⚠ Never operate the stove on a plastic table, or any other surface that is not heat resistant because the reflective heat from combustion may damage the surface of the table.

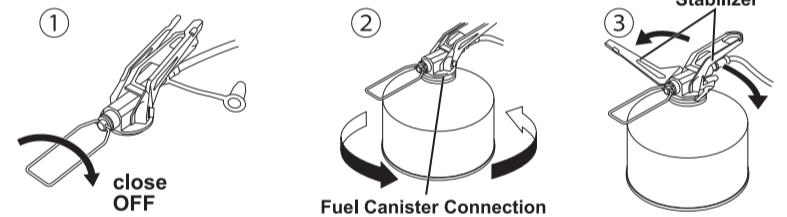
Installation of fuel hose

- 1 Remove plastic guard located at the end of the hose unit. Slide the brass ring located at the Smart Pump hose connection, and connect the hose with the Smart Pump.
- 2 Make sure that the hose joint of the gas valve and the fuel hose are securely connected.



Installation of fuel canister

- 1 Turn the fuel control knob clockwise until it is completely stopped.
- 2 With the connection part of the canister facing up, tighten the gas canister in the direction of the arrow until it stops. Be sure that the appliance does not wobble and that the gas canister is securely connected.
- 3 Set the stabilizer.

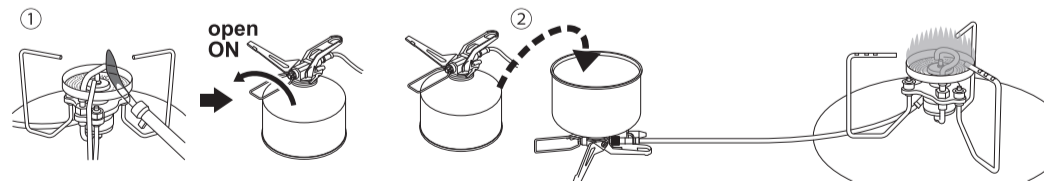


⚠ CAUTIONS

- Be cautious not to get sand etc. into the connection part of the hose. Sand and soil may cause fuel leakage or clogging. When moisture such as water and snow is attached to the connection part of the hose and freezes, the fuel passage is obstructed, blocking the flow of fuel. Avoid any form of moisture on the hose tip while the fuel passage is frozen. Warm where frozen and melt ice to secure fuel passage when ambient temperature is below freezing.
- Be aware of fuel leaks. After installing the fuel canister, be sure to check for the sound of fuel leaks and/or odor.
- Never carry either the stove or the fuel canister when burning. This is dangerous, and such actions may cause burns and fire. Never move stove or fuel canister while burning.
- Check seals between the appliance and the gas canister. Seals must be in place and in good condition before connecting the gas canister. Do not use this appliance if it has damaged or worn seals. If there is a leak from your appliance (smell of gas) and you cannot stop the gas flow, remove the appliance to a well-ventilated location away from any ignition source. When stove completely cool, check for leaks using soapy water. Do not try to detect leaks using a flame.

Ignition

- 1 With the gas canister upright, turn the valve knob to the left to release the gas. Then ignite the gas using a match or lighter.
- 2 After about 5 seconds, when the flame stabilizes, slowly turn the canister upside down. Continuous burning with the flame generated by the gas canister in an upright position may cause the generator to deteriorate faster. Such flame will cause combustion at a higher temperature and will adversely impact the generator material. Be sure to invert the gas canister (turn upside down) about 5 seconds after initial ignition.



Keep the gas canister in the upright position for about 5 seconds after ignition, then invert canister.

⚠ CAUTIONS

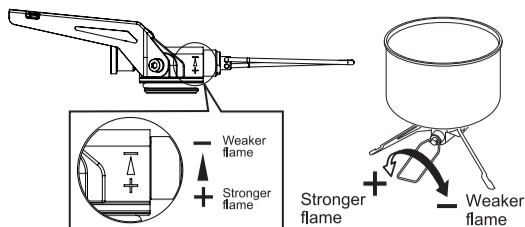
- Never ignite gas that has been released from an inverted (upside down) gas canister at the initial ignition. The inverted gas canister produces raw gas, and raw gas is dangerous.
- Strong winds and rough terrain may cause the canister to roll over. Be sure to set the stove and gas canister on the ground or a stable, flat base when in use. Do not turn the valve on the appliance to the open position immediately after shaking the appliance with the canister attached. A white misty gas (un-vaporized gas) may appear. This is dangerous. Turn valve off and do not ignite when a white mist of gas appears. There is danger of burns and fire when the flame leaps. When a white mist of gas no longer appears, it is safe to ignite the gas. Do not move the appliance when burning.
- Never remove the gas canister from the stove when the stove is in use.
- In case of an emergency, turn off the appliance by turning the Flame Control Knob to the OFF position (turn right) until no gas is supplied to the burner head. If the stove does not extinguish, use a fire extinguisher to extinguish the flame. Before touching the stove, always be sure that the fire is completely extinguished, and the stove is not hot. Then, remove the gas canister after the appliance is completely cooled down.
- If the Flame Control Knob is set to the OFF position, but the flame does not extinguish, do not forcibly rotate the Flame Control Knob. Burn the flame until gas runs out. Contact SOTO for inspection and repair.



Flame control

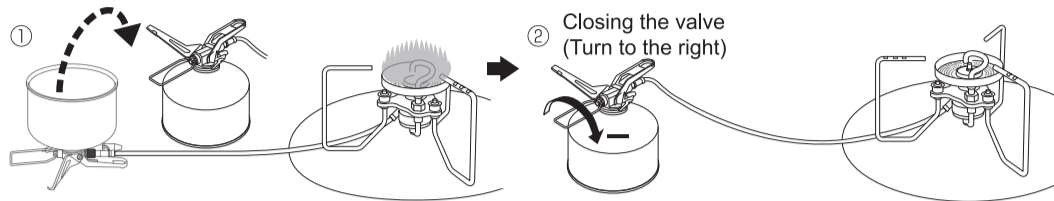
Adjust output by turning the flame control knob gradually while checking the flame.

※ If the gas level inside the gas canister decreases, the flame may undulate (ripple) during combustion. This phenomenon is normal.



Extinguishing the flame

- Slowly turn the gas canister to the upright position.
- Approximately 5 seconds after slowly turning the gas canister to the upright position, turn the valve control knob to the right until it stops. Confirm that the flame is extinguished completely.



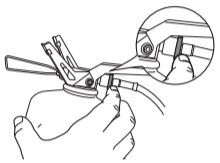
Removing the gas canister

Turn the gas canister to the left and remove from valve.

Warning: Storing the gas canister. Never store the stove when it is connected to the gas canister. Be sure to separate the stove and gas canister when storing. Storing a stove connected to the gas canister may cause gas leakage, fire, property damage, and death.

CAUTIONS

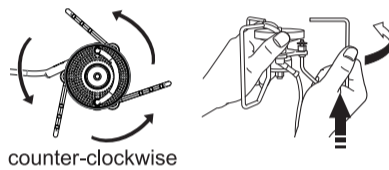
Beware of a malfunctioning slide ring located at the end of the fuel hose connection. If the slide ring malfunctions, stop using the stove and contact your retailer or SOTO. Never touch the slide ring when turning the gas canister. Touching the slide ring when in use may cause it to detach from the hose and/or the gas canister. This is extremely dangerous.



Stowing

Be sure to stow the stove after it has cooled down completely. Reverse this procedure to stow.

- Slide the pot support upward slightly to release it from the locked position. Turn the pot support counter-clockwise (to the left) until it reaches the closed position.



Locking the pot support when stowing: To keep the pot support in the locked position while stowed, be sure to turn the pot support counter-clockwise (to the left) until the pot support locks in with the lock. When the "click" sound occurs, the pot support is in the locked position. See illustration:



- Store the stove and accessories in the carry case.

※ Do not turn the pot support clockwise when stowing the stove. Turning the pot support clockwise will damage the hose unit. This may cause damage to the pot support and hose due to bending. Slide the pot support upward first and then turn it counter-clockwise.

CAUTIONS: Avoid the following:

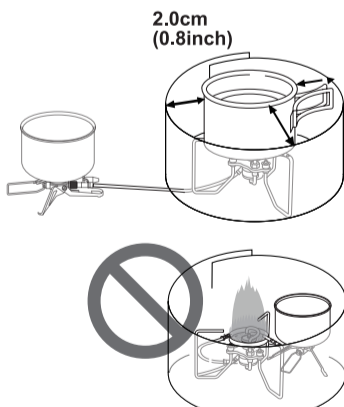
- If the fuel hose bends and the hose burns near the burner head, the hose will deteriorate due to heat from the flame. This may cause the fuel to leak. Extend the hose.
- Do not handle the fuel hose so that it bends more than 90 degrees. This may cause the fuel to leak.
- Instantaneous initial ignition is achieved due to precision design of the generator. Be careful not to deform the generator. When replacing the generator, handle with extreme caution.



Windscreen sold separately.

Caution when using the windscreen

- When using a windscreen other than SOTO's windscreen, be sure to use one made of non-flammable material such as metal. Never use a windscreen of combustible material as there is danger of such material catching fire.
- When installing the windscreen, keep a minimal distance of 2.0 cm (0.8 inch) between the pot and the windscreen to avoid producing a red flame. If using an aluminum windscreen, there is danger of the windscreen melting when exposed to heat.
- The windscreen is extremely hot during and after use. Never touch the windscreen until it cools down completely.
- The dimensions of the windscreen should be between 10 cm to 15 cm in height and 80 cm to 90 cm in width. An oversized windscreen may cause abnormal combustion and increase the possibility of unbalancing cooking utensils.
- Be careful that the flame inside the windscreen is not extinguished during use.
- Never cover the fuel with a windscreen while the stove is in use. Avoid exposing the fuel to heat. The bottle may explode if exposed to heat.



Inspection and care (when using a gas canister)

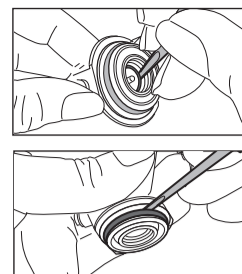
Precautions for inspection and care

- Always inspect before and after use.
- Be sure to clean the burner, especially when food or liquid has spilled onto the burner head.
- Never use the stove when parts are broken or damaged.
- Incomplete repair is dangerous. Consult the retailer where purchased or SOTO when repair is needed.
- Before checking and cleaning, be sure to remove the gas canister after stove is completely cool.
- Never disassemble the hose unit.
- Dirt and moisture will cause damage to the stove. Wipe well with a dry cloth after use. Use a neutral detergent to remove dirt. Remove moisture with a dry cloth.
- Burner ... When perforated holes located on the burner are clogged, the clogged holes will cause incomplete combustion. When perforated holes become clogged with spilled food or liquid, etc., clean with mild detergent and a dry cloth.

- Make a habit of keeping your stove clean.

- The product should be maintained and serviced regularly. The O-rings should be replaced every 3 years. The stove's o-ring should be replaced when wear, cracking, or leakage occurs. A damaged or leaking stove must be repaired before use. Be sure to replace the old O-ring with a factory-authorized O-ring. Please contact SOTO for a replacement O-ring. Please contact your retailer or SOTO if you have any maintenance or repair-related questions.

- Carefully remove O-rings at the base of the unit with a small flathead screwdriver and/or with fingers (as shown in illustration). After gently removing the O-rings, use a soft cloth to remove any dust or debris that may have accumulated. Use fingers and a flathead screwdriver to install the new replacement O-rings.



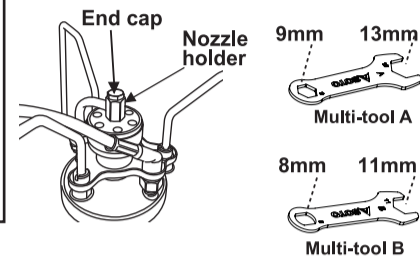
Cautions and Warnings:

Do not attempt any maintenance, modification, disassembly, or repair other than what is contained in this manual. Address any questions to the retailer where purchased or to SOTO. Service and any necessary replacement parts may be obtained by contacting www.sotooutdoors.com. This appliance must only be serviced by an authorized person.

Care and Maintenance (When using a gas canister and gasoline)

CAUTIONS

- Never disassemble or remodel the stove and other accessories other than as described in these manual instructions.
- Always use SOTO genuine parts.
- Always carry the included maintenance kit with the stove.
- Be sure to perform maintenance after the stove has cooled completely.



Accessory parts for maintenance

Multi-tool A: Replace parts and retighten the parts using Multi-tool A.

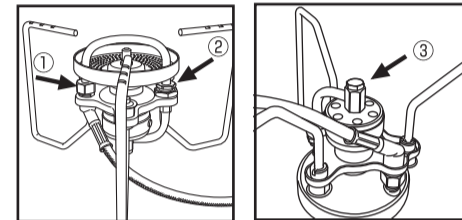
Multi-tool B: Remove the end cap with Multi-tool B.

Re-tightening of each part

Symptom / Fuel leakage was confirmed from the connection part of the generator and the end cap due to extended use or impact.

Re-tighten with Multi-tool B and check for leaks before use.

- Leakage from generator nut (B 11 mm used)
- Leakage from pressure nut (B 11 mm used)
- Leak from end cap (B 8 mm used)



Carbon removal from nozzle

(1) Remove the end cap and clean carbon Symptom / Reduction of power after extended use.

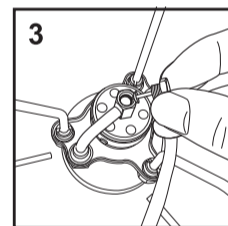
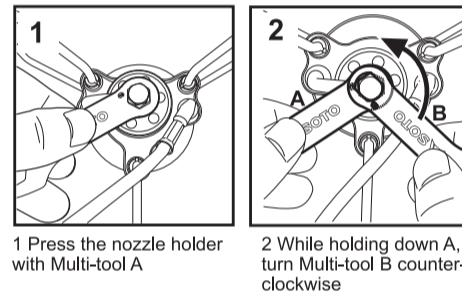
- Press the nozzle holder with Multi-tool A (9 mm).
- Grasp nozzle holder and turn the end cap counterclockwise with Multi-tool B (8 mm).
- Remove the end cap.
- Using the cleaning needle, remove foreign object (such as carbon) that has accumulated inside the nozzle.
- Remove carbon from the end cap mesh with a brush. After cleaning, attach the end cap in the original position reversing this procedure.

CAUTION: The cleaning needle is very fragile and is easily deformed if force is applied.

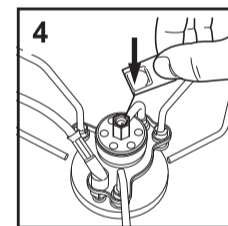
Suggested maintenance schedule:

• Gas: After 20 hours of use

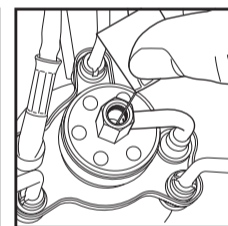
• White gasoline: After 10 liters



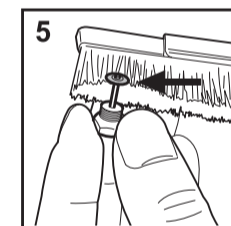
3 Remove the end cap



4 Remove carbon with cleaning needle



Removing carbon lodged inside nozzle.



5 Removing carbon around the end cap

Carbon removal from nozzle

(2) Remove nozzle unit and remove carbon.

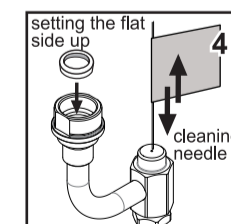
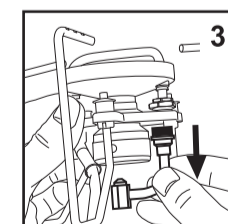
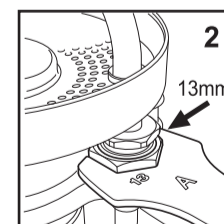
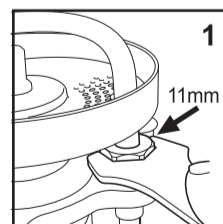
If combustion does not improve after cleaning the end cap, remove the nozzle unit and clean it.

- Loosen the pressure nut with 11 mm Multi-tool and remove.
- Loosen the fixing nut with 13 mm Multi-tool. Multi-tool B (8 mm).
- Pull the nozzle unit downward.

If it is difficult to pull the nozzle unit out, nudge slightly to the left and right. Then attempt to pull again.

- Insert the supplied cleaning needle from outside of the nozzle hole and remove carbon. If ring in the nozzle unit comes off, put it back into nozzle unit by setting the flat side up.
- After cleaning the nozzle unit, reverse this procedure to reassemble unit. When installing the fixing nut, firmly tighten.

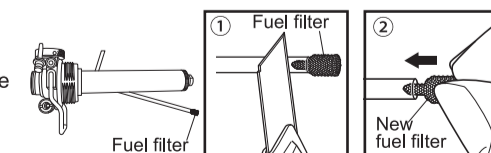
- After assembly, make sure that fuel is not leaking before use.
- The cleaning needle is very fragile and is easily deformed if force is applied.



Smart Pump's fuel filter change

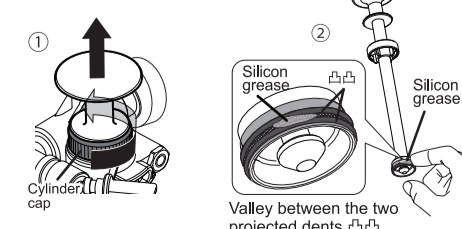
The filter in the hose becomes dirty.

- Use a knife such as a box or pocket knife to cut the hose. Cut the hose adjacent to the fuel filter. (Cut about 5 mm.)
- Insert a new fuel filter into hose opening.



Maintenance of piston packing

- Turn the cylinder cap and remove piston.
- Apply a small amount of the supplied silicone grease between the two protrusions of the piston packing.
- Return the piston to its original position and tighten cylinder cap.



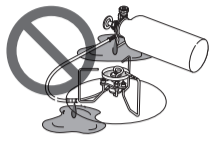
Cautions and Warnings

The mark next to the illustration indicates a prohibition.

•This stove can produce carbon monoxide, which has no odor. Using it in an enclosed space can be deadly. Never use this stove in an enclosed space, including a camper, tent, car, or home. Failure to follow this instruction may cause injury or death.



•Make sure no fuel is leaking out before lighting the stove. Stop operating the stove immediately if a fuel leak is found. Never light a stove that is leaking fuel.



•Never move a hot stove or a stove that is in use. Wait until the stove is completely cooled before touching.

•Never leave a burning or hot stove unattended.

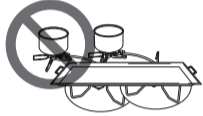
•Keep children and/or pets away from stove and never leave it unsupervised.

•Stop operating the stove if the ambient temperature falls below -20°C (-4°F) because the O-ring will temporarily harden and lose elasticity, causing the fuel to leak.

•Never use 2 stoves side-by-side (i.e., a griddle), as this may cause the stove to deform or explode.

•ALWAYS store fuel in a cool area. Never expose fuel to direct sunlight and never leave inside tent or car. Heated fuel may explode.

•Always keep the connection between hose and pump clean. Failure to keep the connection clean may cause a fuel leak.



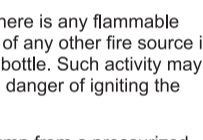
•Do not leave this product while operating.



•Never carry or move the stove while burning. Carrying or moving the stove while burning is extremely dangerous. It will cause the flame to leap out of the burner head.

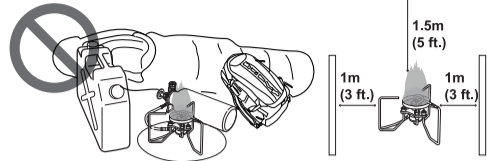
•Always place stove on a base plate when using the stove on snow or ice. The reflective heat from the stove's flame will melt the snow or ice underneath the stove causing severely unstable conditions. The stove will tilt under such conditions causing the stove to fall.

•Never refuel the bottle where there is any flammable source nearby. Smoking or use of any other fire source is prohibited while refilling the fuel bottle. Such activity may be extremely harmful as there is danger of igniting the fuel.



•When separating the Smart Pump from a pressurized Wide Mouth Bottle, one side of the O-Ring may be pushed out by the compressed air. If this occurs, adjust the O-Ring before re-setting.

•Never use the stove near any flammable materials. Keep all such materials at least 1 m (3 ft.) away from sides of the stove and at least 1.5 m (5 ft.) away from top while stove is in use.



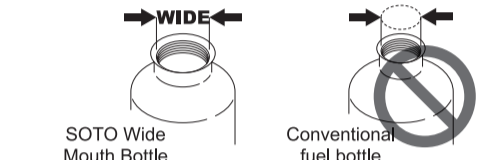
•The generator unit on the Storm Breaker has been engineered precisely to accomplish instantaneous ignition, i.e., non-priming. Be sure to treat it carefully. Dropping or throwing may cause damage to the generator unit which may require a replacement.



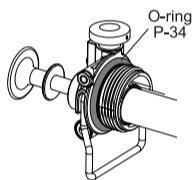
•The Storm Breaker's flexible hose provides smooth and easy operation when setting up and stowing. NEVER bend the hose more than 90°. Failure to follow this instruction may cause a fuel leak. Stop using the stove when any fuel leak is found.



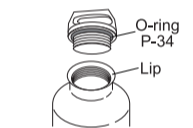
•Use only the SOTO Wide Mouth Bottle. Be sure to read instructions printed on the bottle before use.



•IMPORTANT!!! Always check the lip on top of the bottle and the O-ring P-34 on the Smart Pump for wear-and-tear, including dust, deformation, and cuts. This could cause the fuel to leak resulting in fire, bodily injury, and even death. If dirty, clean the flat lip and the O-ring. Replace the O-ring if wear-and-tear has occurred. Replace the bottle if the flat lip is deformed and cuts are found.

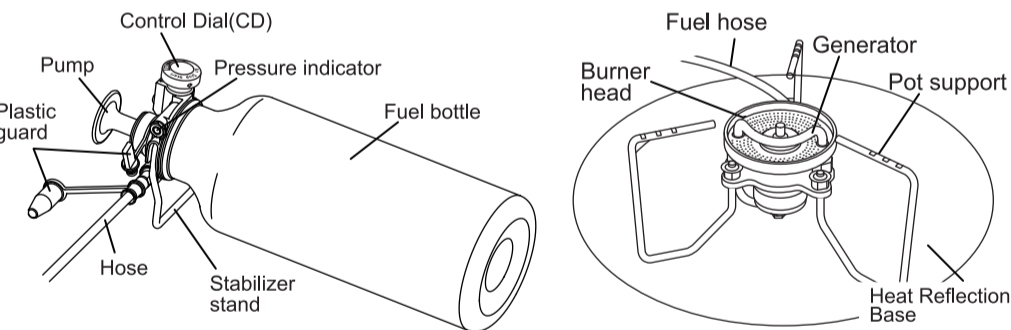


•Always place the cap on SOTO's Wide Mouth Bottle when stowing or traveling. It is not necessary to remove the Smart Pump from the fuel bottle when stowing it for a short period of time. Never leave the Smart Pump in the fuel bottle with fuel in it any longer than 7 days. Be sure that the Control Dial is in the locked position when the Smart Pump is attached to the fuel bottle.



•Always store the Storm Breaker and pump separately when stowing for a long period of time.

Using the stove with gasoline



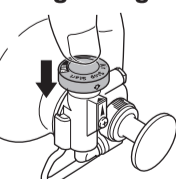
Applicable Fuel

Use either regular unleaded gasoline or white gasoline.

- Never use premium or higher grade gasoline such as super unleaded gasoline as premium fuels. These fuels may contain additives that will cause the generator unit to clog.
- NEVER use any fuel or liquid other than those specifically indicated in this manual.
- NEVER cross-contaminate the stove/bottle unit with fuel/liquid that is not recommended. Be sure to use a clean vessel to carry the designated fuel. Failure to follow this instruction may clog the generator unit.
- The fuel used is highly volatile fuel. Be careful when handling such fuel.
- Do not use old fuel. Old fuel may clog the generator unit.

Preparing

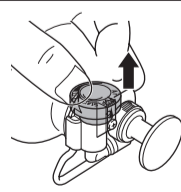
Regarding the Control Dial (CD)



◆“LOCK” position:
The Control Dial will lock when it is pressed. The “LOCK” position will prevent accidental engagement of the operating mode. Always press the CD to the “LOCK” position when stowing the stove or when traveling.

◆Emergency Stop:

Place the CD in the “LOCK” position to extinguish the flame when an emergency arises. The “LOCK” position will cut off the fuel supply immediately but the residual fuel remaining inside the hose may take time to burn off.



◆“UNLOCK” position or “OPERATING” position:
The “OPERATING” position will enable the dial to turn and engage the CD with the 4 positions: START, STOP, RUN, and AIR.

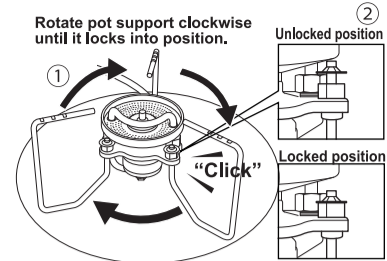
CAUTIONS

The proper procedure for extinguishing a flame is to turn the CD to the “AIR” position. The “AIR” position will cut off the fuel supply, allowing only air to release from the Wide Mouth Bottle. Simultaneously, the air cleans the fuel passage way. This procedure will also ensure a longer life for the generator unit.

Setting up the stove

Place the burner base on a flat, stable surface. Using the stove on a table may damage the table. Be aware of deformation or damage when using the stove on a table.

- 1 Open the 3 pot support systems by rotating each support to the left.
- 2 Confirm that the base of the pot support is securely in place and in the “locked position”.
- 3 Never over-fill the fuel bottle with specified liquid fuel. Never fill with liquid fuel above the “DO NOT FILL ABOVE THIS LINE” line indication on the bottle



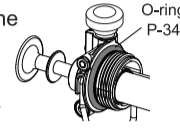
⚠ When filling the bottle with fuel, keep the fuel and bottle far away from a lit stove, naked flame, or any heat source.

⚠ NEVER fill fuel above the “DO NOT FILL ABOVE THIS LINE” mark as the system requires adequate air to ignite. A lack of air supply may result in failure to ignite.

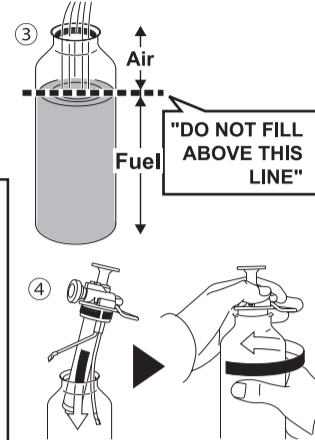
- 4 Insert pump and screw down. Do not connect the hose at this point.

⚠ When inserting the pump, carefully place it into the bottle to avoid damage of all pipes installed in the pump system.

⚠ IMPORTANT!!! Always check the lip on top of the bottle and the O-ring P-34 on the Smart Pump for wear-and-tear, including dust, deformation, and cuts. This could cause the fuel to leak, resulting in fire, bodily injury, and even death. If dirty, clean the flat lip and the O-ring. Replace the O-ring if wear-and-tear has occurred. Replace the bottle if the flat lip is deformed and cuts are found.



⚠ Check to see if the valve nozzle is loose. If loose, tighten with the Multi-tool.



- 5 Wipe off any spilled fuel with a clean cloth.

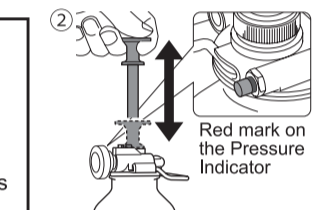
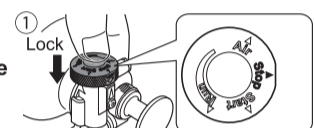
Pumping

- 1 Make sure that the Control Dial (CD) is in the locked position (depressed position), and it is set at the “STOP” position.
- 2 Begin pumping using full strokes. When a red mark on the Pressure Indicator becomes visible, stop pumping.

The red line on the Pressure Indicator means that optimal pressure has built up inside the bottle.

⚠ CAUTION: Excess pressure may cause a leaping red flame when igniting. Do not over-pressurize the bottle. Too little pressure may cause a failure to ignite the flame properly.

⚠ At low temperatures, the Pump Shaft Gasket may undergo shrinkage causing difficulty in pressurizing the bottle. If this is observed, unscrew the cylinder cap, remove the pump shaft and bring the Pump Shaft Gasket to body temperature. Return the units and continue pressurizing the bottle.



Fuel bottle 700ml	Level of the fuel	Pumping strokes
Filled to the “Do not fill above this line”	480 ml	70 times
Half filled	240 ml	140 times

Fuel bottle 1000ml	Level of the fuel	Pumping strokes
Filled to the “Do not fill above this line”	700 ml	90 times
Half filled	350 ml	210 times

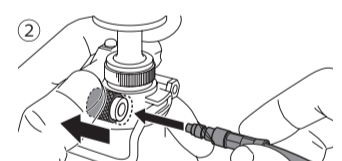
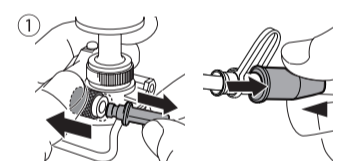
Pressure Indicator facilitates the operator by ensuring a successful ignition at each initial operation. The Pressure Indicator also prevents operator from over-pressurizing the fuel bottle. The Pressure Indicator may not accurately reflect the exact pressure inside the fuel bottle. The Pressure Indicator will not move in and out according to the pressure built up or released inside the fuel bottle.

Prepare the unit

- 1 Remove plastic guards located at the end of the hose unit and at the connection on the Smart Pump.
- 2 Connect the hose to the Smart Pump. Confirm that the Smart Pump and hose sections are securely connected.

⚠ Keep the Smart Pump and hose units clean and free from dust, sand, and other debris. Failure to heed this warning may cause a fuel leak.

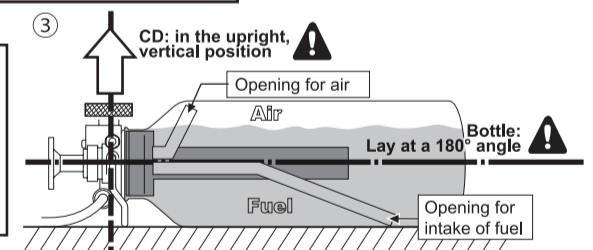
⚠ Fuel flow will be blocked when snow or ice is formed at the brass hose connections. Be sure to keep the connection areas clean and free of any water, snow, and ice to avoid the formation of ice which blocks the fuel flow. Should this occur, warm up the connection section, keeping it clean and free from ice.



- 3 Lay bottle down.

⚠ ALWAYS lay the bottle down with the stabilizer downward. Be sure to lay the bottle at a 180° angle. (Refer to the illustration.)

⚠ The Control Dial (CD) must ALWAYS be in the upright, vertical position when unit is in use. (Refer to the illustration.)

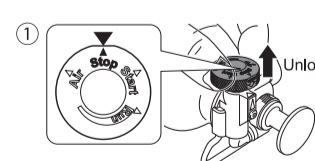


Ignition

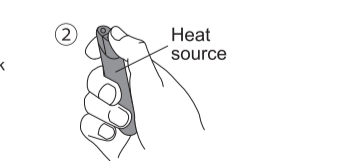
⚠ The low profile Storm Breaker produces a robust flame. The stove is intended for outdoor use ONLY. Never use the stove on a desk, counter-top, furniture, etc.

⚠ Use of the reflective sheet in the snow: When used with the stove in the snow, the reflective heat may cause the snow to melt under the sheet, making the base unstable. Be sure to check snow conditions under the reflective sheet regularly to avoid potential sliding of pots which may be full of hot liquid or food.

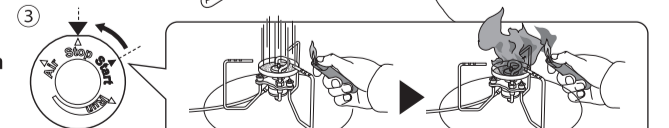
- 1 IMPORTANT: Confirm that the CD position is at the “STOP” position. Then pull the CD upward to unlock.



- 2 Prepare a heat source.



- 3 Turn the CD to the “START” position and ignite. Initial ignition may produce a strong red leaping flame.



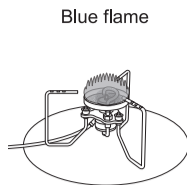
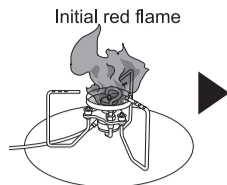
⚠ Never place face or other body parts directly over the stove when lighting.

⚠ The initial ignition will significantly reduce pressure built up inside the bottle. Always make sure to optimize the pressure inside the fuel bottle before igniting the stove.

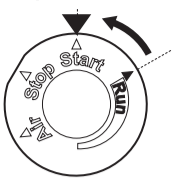
Only air will be released during the initial 2 to 3 seconds. Ignite the gas mixture made up of fuel and air. ATTENTION: Only air will be released during the initial 2 to 3 seconds after the CD is turned to the “START” position. Then fuel mixed with air will appear at the burner head.

Stabilizing the flame

- ① When the initial red flame transforms into a blue flame, turn the CD to the "RUN" position.



Wait about 40 seconds. Stabilizing the flame (flame changes to blue) after ignition may take more time and is dependent on ambient temperature, wind, etc.



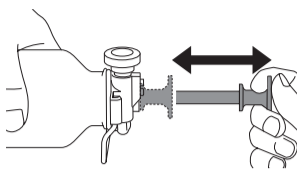
- ② Pump to increase pressure as necessary for continued use of the stove. Remember to stop pumping when the red mark on the Pressure Indicator becomes visible.



The initial ignition will consume most of the pressure built up inside the Wide Mouth Bottle. Be sure to add adequate pressure when the CD is set to the "RUN" position.



The red line on the Pressure Indicator means that the pressure has adequately built up inside the bottle. NEVER over-pressurize the bottle. DANGER: Failure to follow this instruction may cause the stove to produce a dangerous, raw flame.



Flame Control

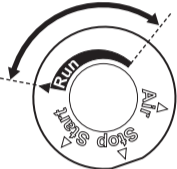


Be sure to turn the CD to the "RUN" position. The "START" position allows a mixture of fuel and air to release. If the CD is left on the "START" position, the Wide Mouth Bottle will continue losing its built-up pressure.

The "RUN" position offers a range of flame control. The operator can regulate the flame by adjusting the CD.

A range of flame control

- There is a delay between adjusting the fuel control dial and the flame's response. Adjusting the flame to simmering: Observe the simmering flame until it is stabilized.
- The ability to simmer may be slightly affected by atmospheric temperatures as well as built-up pressure inside the bottle.
- The flame may be extinguished when a large amount of liquid is spilled on the Generator unit.
- Under windy conditions, the vent on the stove body may draw in the flame, causing the stove to produce a red flame. To resolve this problem, turn the vent against the wind.

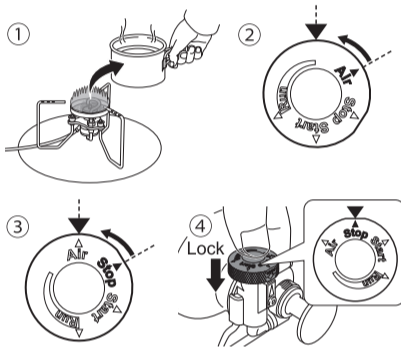


Extinguishing the flame

- ① Remove all cooking utensils from the stove.
- ② Turn the CD to the "AIR" position. This position allows air to flow inside the hose while shutting off fuel flow.



A large flame will leap out of the burner head when the CD is turned to the "AIR" position.



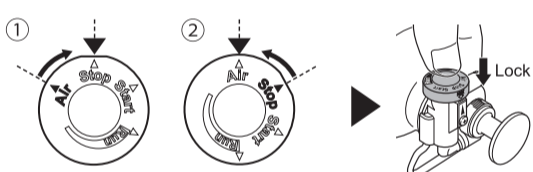
- ③ The flame will be extinguished when all fuel inside the hose is burned off. Once this happens, turn the CD to the "STOP" position.
- ④ Depress the CD to ensure safety.

Taking the Smart Pump out of the Wide Mouth Bottle

- ① Turn the CD to the "AIR" position to release air pressure from the Wide Mouth Bottle so that the Smart Pump can be unscrewed.



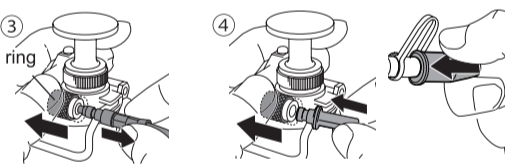
If there is any residual pressure left inside the bottle, unscrewing the Smart Pump from the bottle will be difficult.



- ② The CD must be placed in the "LOCK" position to prevent any accidental fuel leaks.



Failure to set the CD to the depressed position or "LOCK" position may cause a fuel leak during transportation of the unit.

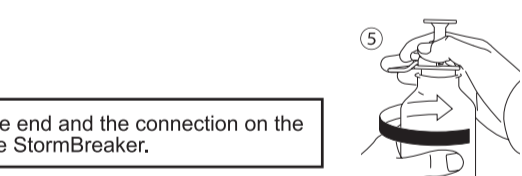


- ③ Release hose from the Smart Pump.

- ④ Place plastic caps on the Smart Pump connector and hose connections.



Always secure the plastic caps for the hose end and the connection on the Smart Pump when stowing and moving the StormBreaker.



- ⑤ Unscrew the Smart Pump and extract the pump unit carefully.



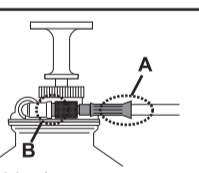
Never screw or unscrew the Smart Pump and the Wide Mouth Bottle when the hose unit is attached.



Never hold the hose base (illustration A) or the pump connection (illustration B) to screw or unscrew the Smart Pump from the Wide Mouth Bottle. If the Bottle is pressurized, the force will cause areas "A" and "B" to break.



NEVER separate the Smart Pump and Wide Mouth Bottle when there is residual pressure inside the bottle. Failure to observe this instruction will cause damage to the pump system. It may also cause fuel to spray out creating a potential fire hazard as well as bodily injuries.

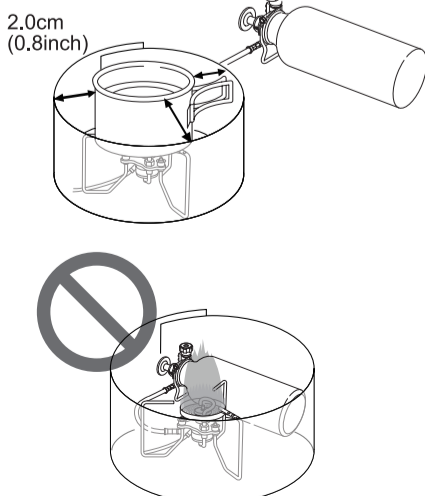


- ⑥ Pot support is extremely hot during and after use. Completely cool unit before stowing.

Windscreen sold separately.

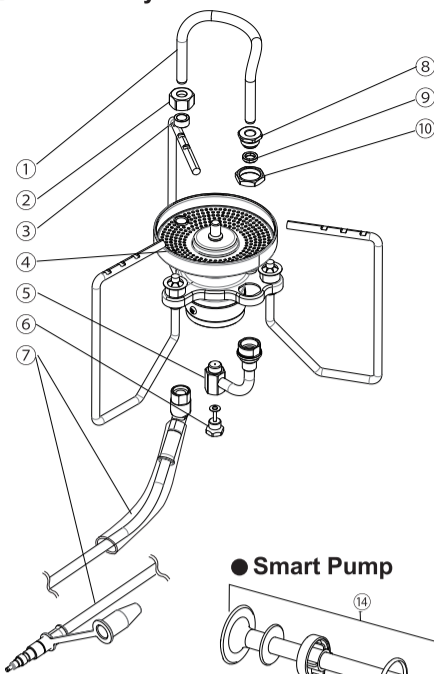
Caution when using the windscreen

- When using a windscreen other than SOTO's windscreen, be sure to use one made of non-flammable material such as metal. Never use a windscreen of combustible material as there is danger of such material catching fire.
- When installing the windscreen, keep a minimal distance of 2.0 cm (0.8 inch) between the pot and the windscreen to avoid producing a red flame. If using an aluminum windscreen, there is danger of the windscreen melting when exposed to heat.
- The windscreen is extremely hot during and after use. Never touch the windscreen until it cools down completely.
- The dimensions of the windscreen should be between 10 cm to 15 cm in height and 80 cm to 90 cm in width. An oversized windscreen may cause abnormal combustion and increase the possibility of unbalancing cooking utensils.
- Be careful that the flame inside the windscreen is not extinguished during use.
- Never cover the fuel with a windscreen while the stove is in use. Avoid exposing the fuel to heat. The bottle may explode if exposed to heat.



Assembly Drawings

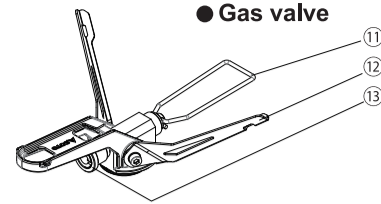
● Burner body



● Burner body

1. Generator
2. Generator nut
3. Spacer ring (brass)
4. Burner head
5. Nozzle unit
6. End cap
7. Burner hose
8. Pressure nut
9. Spacer ring (stainless steel)
10. Fixed nut

● Gas valve



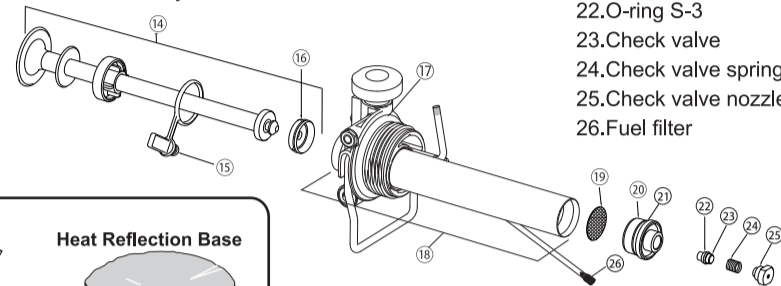
● Gas valve

11. Instrument plug cap
12. Stabilizer
13. Slide ring

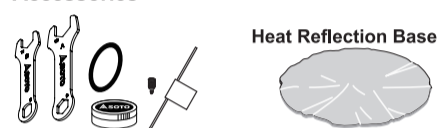
● Smart Pump

14. Piston unit
15. Coupler cap
16. Piston packing
17. O-ring P-34
18. Cylinder unit
19. Pump filter
20. Check valve holder
21. O-ring 13.8 x 2
22. O-ring S-3
23. Check valve
24. Check valve spring
25. Check valve nozzle
26. Fuel filter

● Smart Pump



Accessories



Maintenance kit
(Multi Tool A, B, O-ring P-34, Silicone grease, cleaning needle, fuel filter)

Optional items (Sold separately)



To purchase parts, contact the dealer stove was purchased from or SOTO at www.sotooutdoors.com.

Output: 3,000 kcal/h 3.5kW 11,780 BTU

Types of fuel: White gasoline, Regular unleaded gasoline / 70% butane/30% propane mix gas cartridge

Usage time: approx. 0.8 hour (when using one SOTO 250g gas canister)
: approx. 1.6 hour when used with 480ml white gasoline / Regular unleaded gasoline.

Weight: 225g / 7.9 oz (body only)

Total weight: 448 g (main body: 225 g, Butterfly Gas Valve: 53 g, Smart Pump: 170 g)

Dimensions when in use (stove body only): 150 x 130 x 9.0cm (6.0 x 5.2 x 3.5 inches)

Dimensions when stowed (stove body only): 6.5 x 6.5 x 9.0cm (2.6 x 2.6 x 3.5 inches)

Service and Warranty Information

Warranty registration card

Detach and Return to SOTO within 30 days of purchase

Product: OD-1ST, Storm Breaker

Lot #: _____

Warranty period: One year from the date of purchase

Date of purchase: _____ (Copy of the receipt is required.)

Name: _____

Address: _____

City: _____ State: _____ Zip: _____

Amount paid: _____

Place of purchase:

Store name: _____

City: _____, State: _____, Zip: _____

() Gift, () SOTO, () Other _____

If purchased online, URL: _____

Terms of Warranty

1. Please return Registration-OD-1ST to SOTO. Proof of purchase is required and the warranty is non-transferable. The warranty does not cover damage caused by misuse, abuse, accident, or tampering. A fee will be assessed to repair the product with such damage. Please contact SOTO by phone or e-mail to receive a Return Authorization Number (RA) prior to shipping the damaged product to SOTO. Shipping cost to SOTO is the purchaser's responsibility. SOTO will pay the return postage.
2. SOTO may not repair the product without the warranty and the product. If the product requiring repair is a gift and the retailer is unable to repair the product, please contact SOTO for further information.
3. There will be a cost for repair for the following conditions, even if the product is under the warranty period:
 - Damage resulting from misuse or damage resulting from the repair or modification of the product.
 - Damage caused by dropping the product after purchase.
 - Damage caused during transportation. Damage caused by fire, earthquake, water, lightning, salt. Damage caused by any other natural disasters or pollutions.
 - The Warranty Registration must be forwarded to SOTO within a 30 day period after purchase.
 - In the event that the warranty card is lost, SOTO will not reissue it.

SOTO has made every effort to ensure that this product is in excellent condition. If you experience difficulties, DO NOT attempt to repair the product. Return it to your retailer or send it to SOTO at the below address.

Shin Fuji Burner CO.,LTD.

SOTO USA Inc.

Lebanon, Oregon USA

Phone: 503-314-5119

info@sotooutdoors.com www.sotooutdoors.com

